



Children's Activity Sheets for Love Your Burial Ground/ Churches Count on Nature Week



Signs and Symbols Scavenger Hunt

print this and the next page on a single sheet of paper and the explanation will appear on the back of the symbol



Star of David



Lamb



Ship



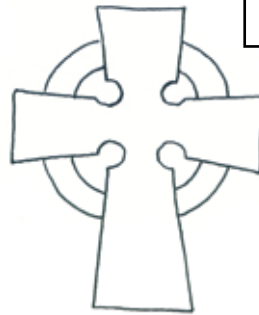
Crescent and star



Dove



Book or scroll



Cross



Hands



Urn



Ivy



tools of the trade



Wreath



Flowers



Angel



ISH



Oak leaves or tree

Signs and Symbols Scavenger Hunt

Crescent and star

This is a symbol of Islam as is the name of god or the greatest name

Ship

A ship or a boat could mark the grave of a sailor, it is also a symbol for taking a journey.

Lamb

Jesus as the lamb of God, also a symbol of gentleness and innocence

Star of David or 6 Pointed Star

This is a symbol of Judaism or a Masonic symbol

Hands

Hands clasped means a close bond like a marriage. Hands pointing down is thought to mean a sudden death and pointing up means heaven.

Cross

You may find different types of cross but they all symbolise a strong Christian faith.

Book or scroll

This could symbolise faith or a scholar. The book may be a bible symbolising a religious person or a prayer. A scroll is a symbol of life and time.

Dove

This is a symbol of the Holy Spirit and of the release of the soul after death

Wreath

This is a symbol of victory over death

Tools of the Trade

You may find a symbol that shows a job or hobby. An anvil or hammer could be the symbol of a blacksmith. A violin could be a symbol for a musician and miner's lamp a miner.

Ivy

Ivy has many meanings including memory, immortality, friendship, faithfulness, undying affection and eternal life.

Urn

This is a Greek symbol of mourning, symbolising sadness. An urn was originally used to put the ashes of the dead in ancient times.

Oak leaves or tree

The oak tree has many meanings including hospitality, stability, strength, honour, eternity, endurance and liberty. It is believed to have been the tree from which Jesus Christ's cross was made.

ISH

This is Latin for *Jesus Hominum Salvator* which means Jesus the Saviour of Man. IHS are also the first 3 letters of the Greek word for Jesus.

Angel

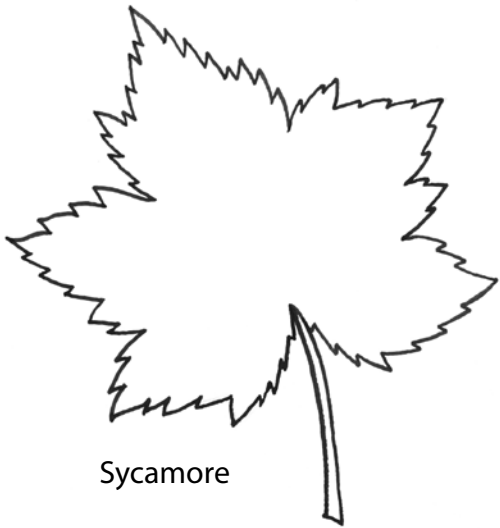
Angels are the agents of God, often pointing towards heaven. They could symbolise the guardians of the dead and spirituality.

Flowers

They are often found on gravestones and mean many different things including love, beauty and hope. The lily is an ancient Greek symbol of motherhood.

Sketch Your Own Symbols

LEAF TEMPLATES



Sycamore



Hawthorn



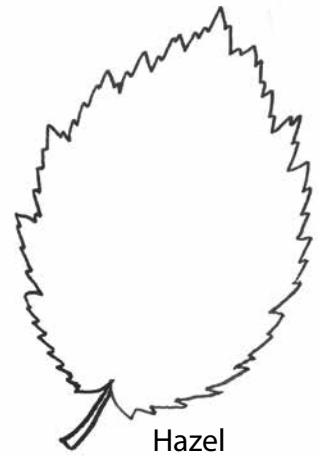
Holly



Oak



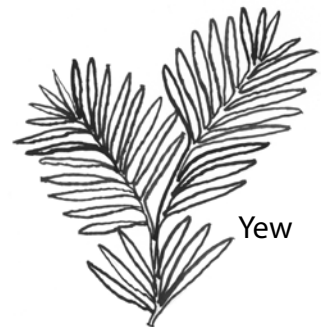
Ash



Hazel



Which leaves can you find?
Can you find different ones?

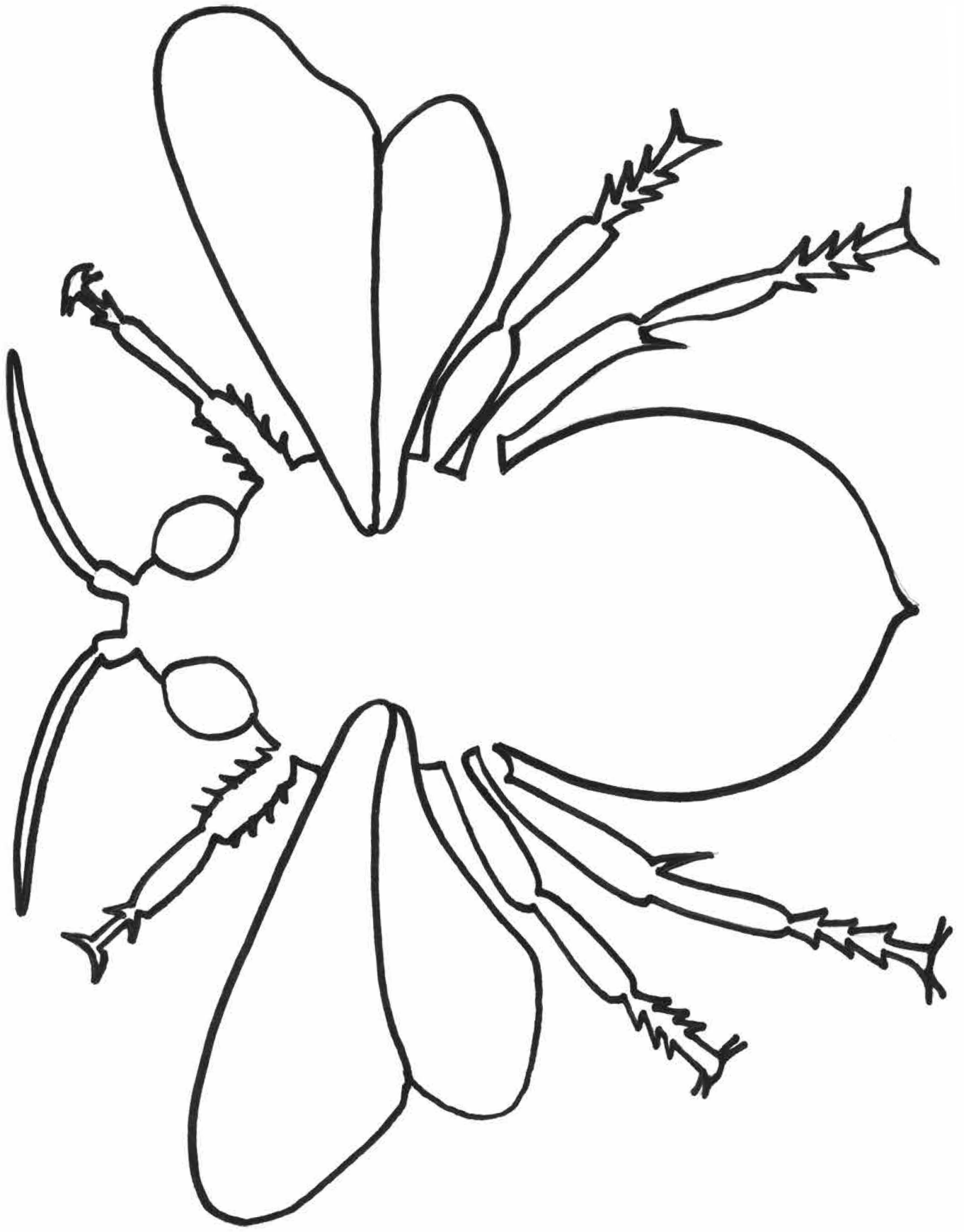


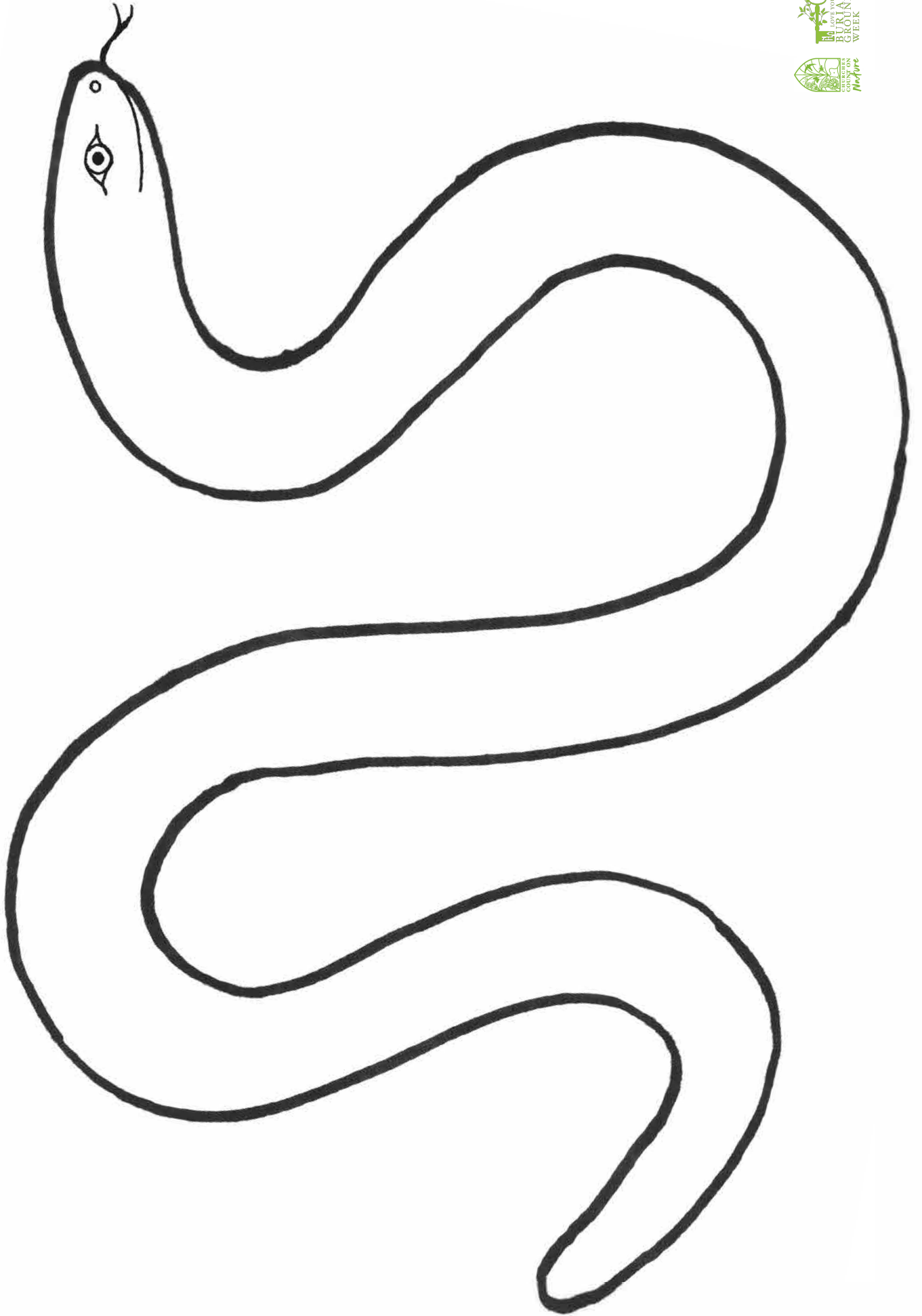
Yew

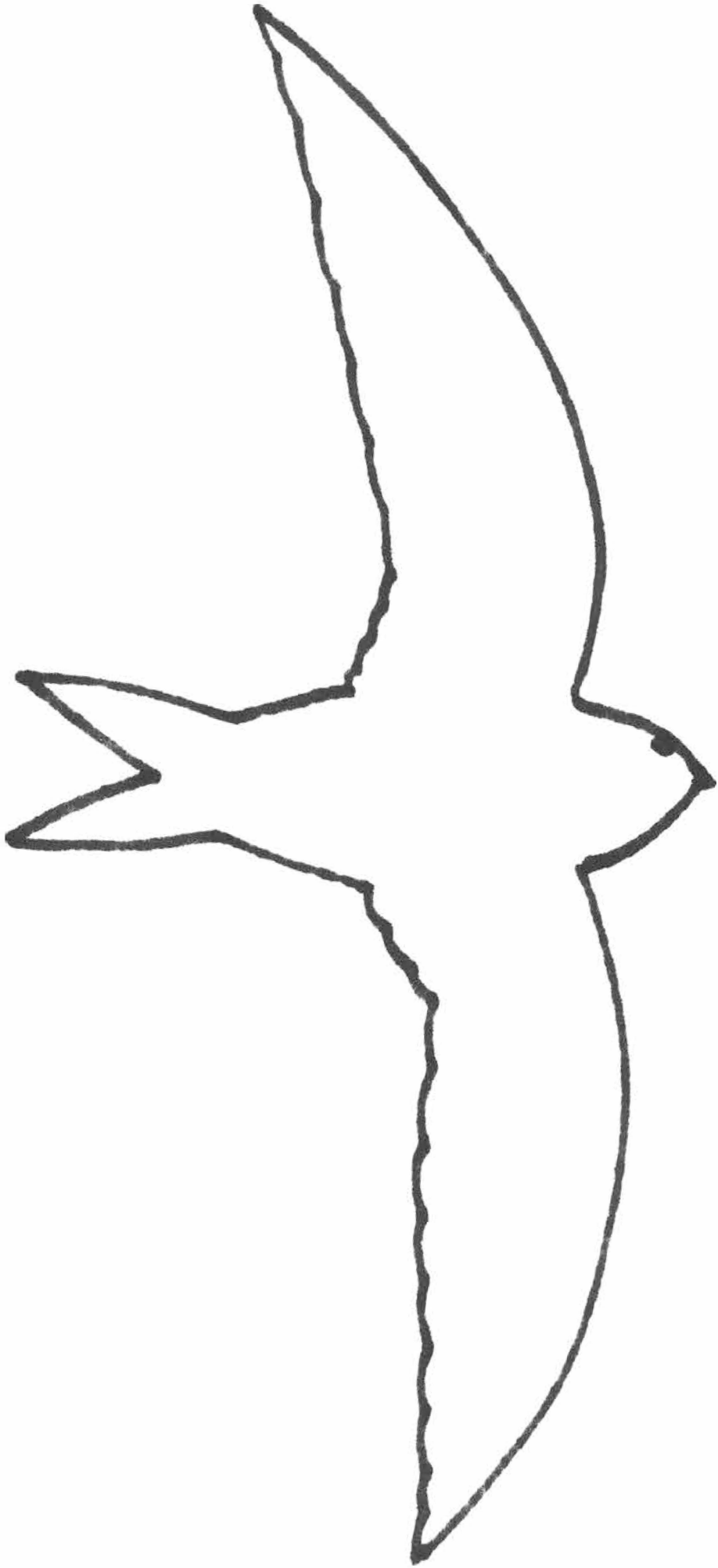


Beech

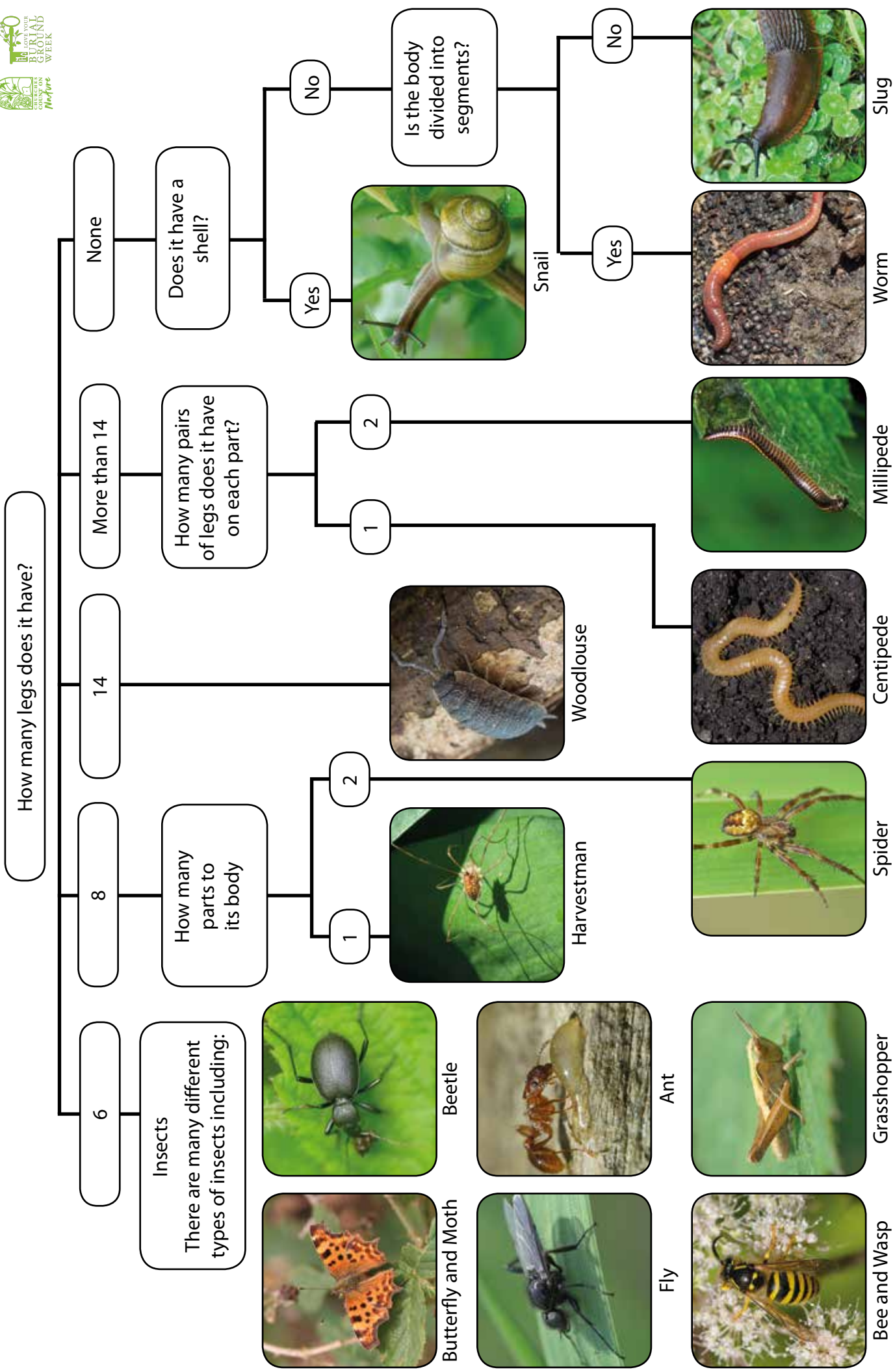








Minibeast Identification Key



Wildflower Spotter Sheet

Can you spot any of these plants in your burial ground?
Once you have identified a plant you can submit your findings as a record.
Visit <http://tinyurl.com/sharerecords> to find out how.



©northeastwildlife.co.uk

Bellflower



©northeastwildlife.co.uk

Oxeye Daisy



©northeastwildlife.co.uk

Buttercup



CaringforGod'sAcre

Common Knapweed



©northeastwildlife.co.uk

Red Campion



Ryan - Hohnett, CC BY-SA 4.0, via Wikimedia Commons

Selfheal



©northeastwildlife.co.uk

Forget-me-not



©northeastwildlife.co.uk

Meadow Cranesbill



Phil Sellens from East Sussex, CC BY 2.0, via Wikimedia Commons

Ivy Leaved Toadflax